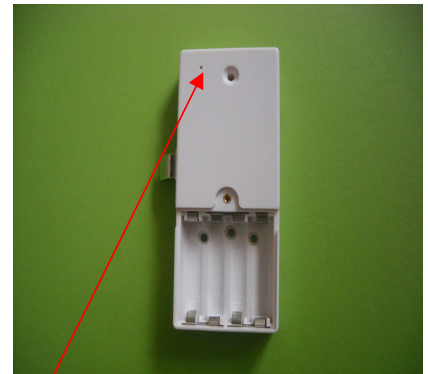
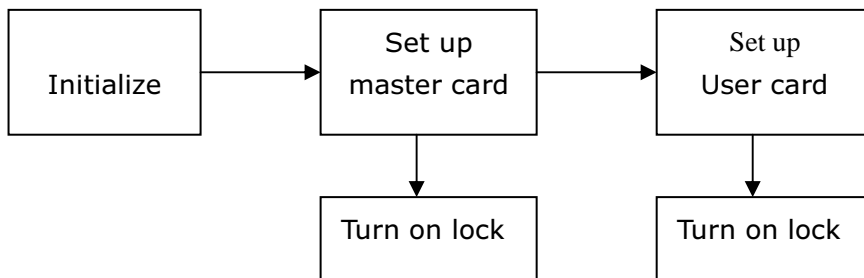


EM-LOCK-V2 (Setup Manual)

Setup Flow chart



Reset button inside.
use clip to press it through this hole

Remarks :

- [1] Two function of the master card.
- read once to open the lock as a user card
 - To setup the user card

Below steps shown how to reset the lock , add and delete cards.

[1] Initialization (Reset master and user card)

Use clip to press the reset button ~2-3 second until hear "1 beep" sound → release → then will hear 5 beep sound and Blue LED will flash → cleared all information successfully (includes master card and User card).

[2] Set up Master card (Only 1 master card can be set)

After Initialization on step 1 , place a EM4100 card on the lock panel → hear "2 beep" sound means the master card setup successfully

[3] Add User card (max. 14 pcs user cards can be set)

At this time , read the master card one time (lock will open and LED flash 5 second) → during this 5 second period place a user card on the panel to read → hear "Di Di" means the first user card setup successfully → place another user card to read → hear "Di Di" again means the second user card setup successfully.

The lock will be closed after time out.

Then wait until Led off , the user cards can be used to open the lock now.

[4] delete User card

Keep to place the master card on the panel (lock will open and close 2 times) until hear "4 short beep" and "3 long beep" → all user cards data are deleted

Alarm for low power

If battery power is less than 4.8V, LED will flash and beep will sound when open the lock .

Need replace the battery as soon as possible.

External power supply

When battery power is too low or power failure for operation.

A external power supply box can be connected with the panel for operation temporary.